

Double roll crusher



Ideal solution for grinding and for cullet preparation

Low energy requirement, long service life and low wear and tear are among industry demands on double roll crushers on top of the optimum comminution curve. Furthermore, double roll crushers crush glass/cork connections (glass in screw connections or glass around corks), bottlenecks and thick bottle bottoms. Large size glass-bottle parts are thus turned into even-sized cullet which can be passed on for optimal separation in an ideal size.

Binder+Co's roller crusher is adaptable to the individual task: the slot width is adjustable to the specific application and input material. The movable supporting structure of the double roll crusher allows easy and fast access for maintenance.



Hard face welded standard rolls for crushing hollow glass cullet. One roll is additionally cross welded for a better feeding of the input material.

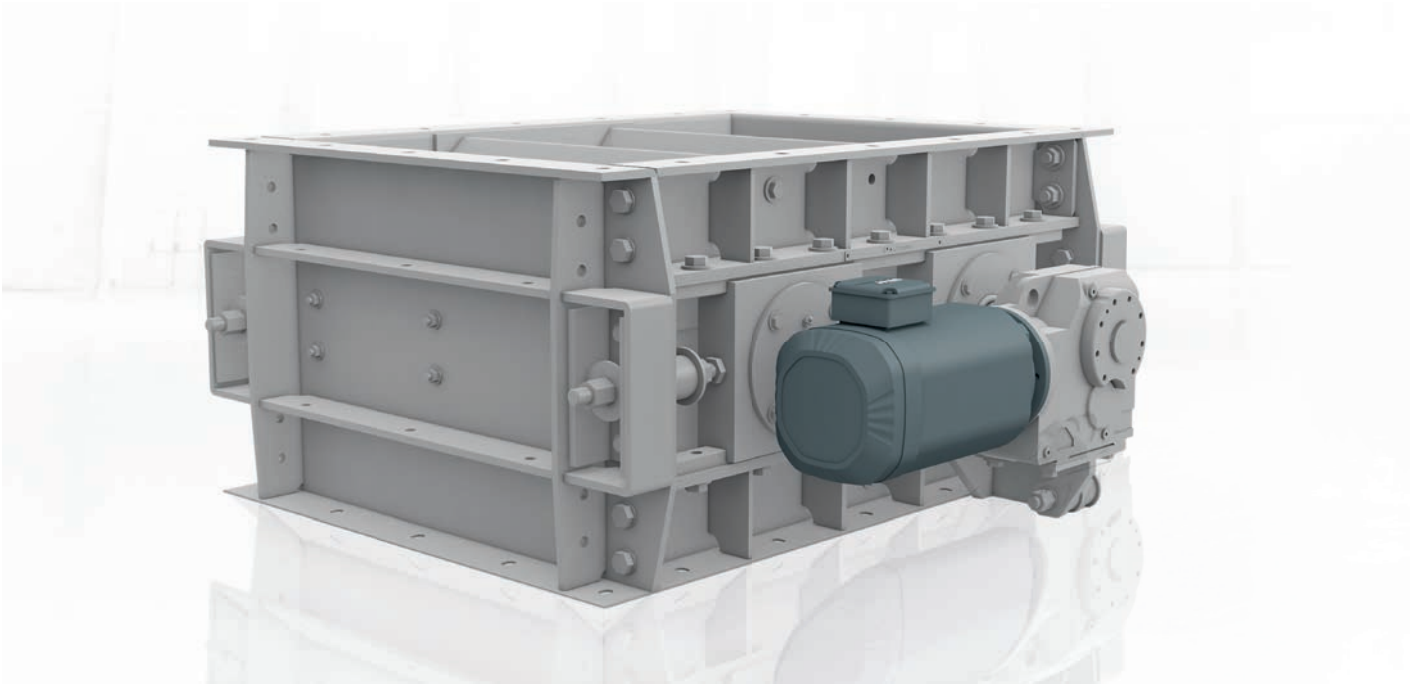


Hard face welded and grooved rolls for flat glass crushing.



Hard face welded and grinded rolls for fine milling.

Double roll crusher



Type	Roll diameter	Roll length	Slot width	Drive power	Capacity*
Coarse					
WGB 470/510	470 mm	510 mm	5 – 15 mm	2 x 5,5 kW	2 – 6 t/h
WGB 470/710	470 mm	710 mm	5 – 15 mm	2 x 5,5 kW	3 – 9 t/h
WGB 800/910	1800 mm	910 mm	5 – 15 mm	2 x 7,5 kW	5 – 15 t/h
Fine (input < 10 mm)					
WGB 470/510 fine	470 mm	510 mm	0,4 – 2 mm	2 x 5,5 kW	0,5 – 2,5 t/h
WGB 470/710 fine	470 mm	710 mm	0,4 – 2 mm	2 x 5,5 kW	0,7 – 3,5 t/h
WGB 800/910 fine	800 mm	910 mm	0,4 – 2 mm	2 x 7,5 kW	1 – 5 t/h

*Dependent on slot width and input material

www.binder-co.com